

COSTCO NORTHLAKE REPLAT, A PUD

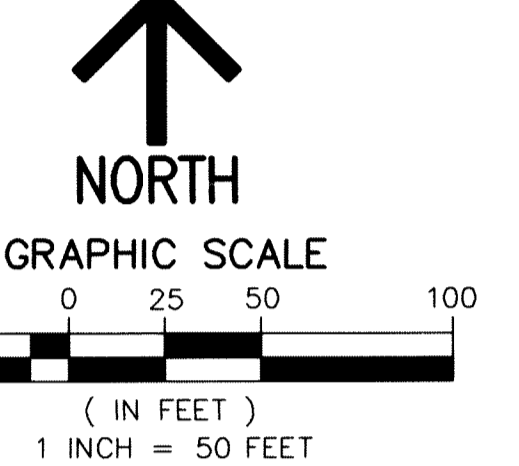
BEING A REPLAT OF THE SPORTS AUTHORITY AT PALM BEACH GARDENS, ACCORDING TO THE PLAT THEREOF, AS RECORDED IN PLAT BOOK 79, PAGE 44, PUBLIC RECORDS OF PALM BEACH COUNTY FLORIDA AND A PORTION OF THE NORTHEAST ONE-QUARTER OF SECTION 19, TOWNSHIP 42 SOUTH, RANGE 43 EAST LYING IN CITY OF PALM BEACH GARDENS, PALM BEACH COUNTY, FLORIDA

"NOTICE" THIS PLAT, AS RECORDED IN ITS GRAPHIC FORM, IS THE OFFICIAL DEPICTION OF THE SUBDIVIDED LANDS DESCRIBED HEREIN AND WILL IN NO CIRCUMSTANCES BE SUPPLANTED IN AUTHORITY BY ANY OTHER GRAPHIC OR DIGITAL FORM OF THE PLAT. THERE MAY BE ADDITIONAL RESTRICTIONS THAT ARE NOT RECORDED ON THIS PLAT THAT MAY BE FOUND IN THE PUBLIC RECORDS OF PALM BEACH COUNTY.

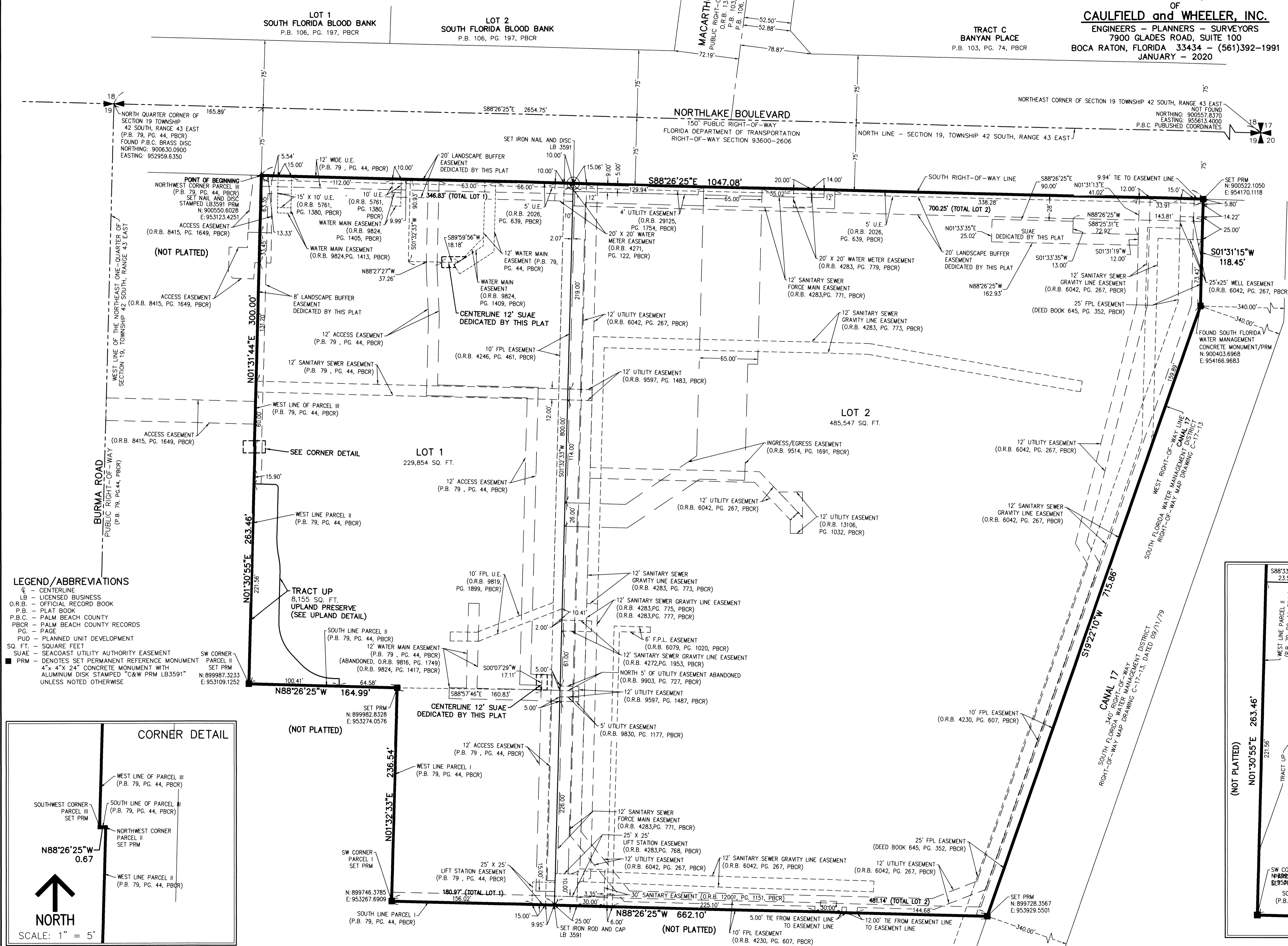
THIS INSTRUMENT WAS PREPARED BY
DAVID P. LINDLEY, PLS
OF
CAULFIELD and WHEELER, INC.
ENGINEERS - PLANNERS - SURVEYORS
7900 GLADES ROAD, SUITE 100
BOCA RATON, FLORIDA 33434 - (561)392-1991
JANUARY - 2020

92

SHEET 2 OF 2



- SURVEY NOTES:**
- EXCEPT WITH RESPECT TO MATTERS OF RECORD, IN THOSE CASES WHERE EASEMENTS OF DIFFERENT TYPES THAT ARE DEDICATED BY THIS PLAT CROSS OR OTHERWISE CONDUCE, DRAINAGE EASEMENTS SHALL HAVE FIRST PRIORITY, UTILITY EASEMENTS SHALL HAVE SECOND PRIORITY, ACCESS EASEMENTS SHALL HAVE THIRD PRIORITY, AND ALL OTHER EASEMENTS SHALL BE SUBORDINATE TO THESE WITH THEIR PRIORITIES BEING DETERMINED BY USE RIGHTS GRANTED. THERE SHALL BE NO TREES OR SHRUBS PLACED ON UTILITY EASEMENTS WHICH ARE PROVIDED FOR WATER AND SEWER USE OR UPON DRAINAGE EASEMENTS WITHOUT THE CONSENT OF THE EASEMENT BENEFICIARIES. LANDSCAPING ON OTHER UTILITY EASEMENTS SHALL BE ALLOWED ONLY AFTER CONSENT OF ALL THE UTILITY COMPANIES OCCUPYING SAME.
 - THERE MAY BE ADDITIONAL RESTRICTIONS THAT ARE NOT RECORDED ON THIS PLAT THAT MAY BE FOUND IN THE PUBLIC RECORDS OF PALM BEACH COUNTY, FLORIDA.
 - ALL RECORDING REFERENCES ARE RECORDED IN THE PUBLIC RECORDS OF PALM BEACH COUNTY, FLORIDA.
 - BEARINGS SHOWN HEREON ARE RELATIVE TO THE NORTH LINE OF SECTION 19, TOWNSHIP 42 SOUTH, RANGE 43 EAST, SAID LINE BEARING S88°26'25"W, RELATIVE TO THE FLORIDA STATE PLANE COORDINATE SYSTEM, EAST ZONE, NORTH AMERICAN DATUM OF 1983 (90 ADJUSTMENT).



- LEGEND/ABBREVIATIONS**
- CL - CENTERLINE
 - LB - LICENSED BUSINESS
 - O.R.B. - OFFICIAL RECORD BOOK
 - P.B. - PLAT BOOK
 - P.B.C. - PALM BEACH COUNTY
 - P.B.C.R. - PALM BEACH COUNTY RECORDS
 - PC - PAGE
 - PUD - PLANNED UNIT DEVELOPMENT
 - SQ. FT. - SQUARE FEET
 - SUA - SEACOAST UTILITY AUTHORITY EASEMENT
 - PRM - DENOTES SET PERMANENT REFERENCE MONUMENT WITH 4" X 4" X 24" CONCRETE MONUMENT WITH ALUMINUM DISK STAMPED "C&W PRM LB3591" UNLESS NOTED OTHERWISE

